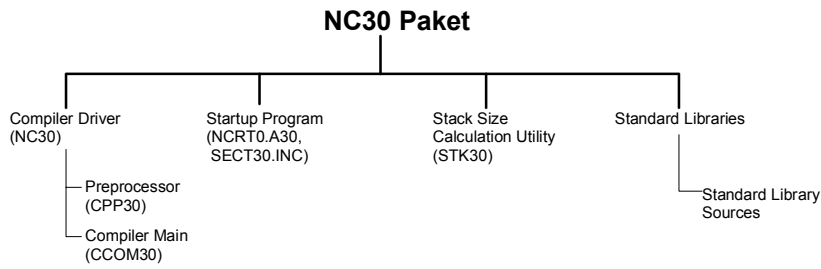
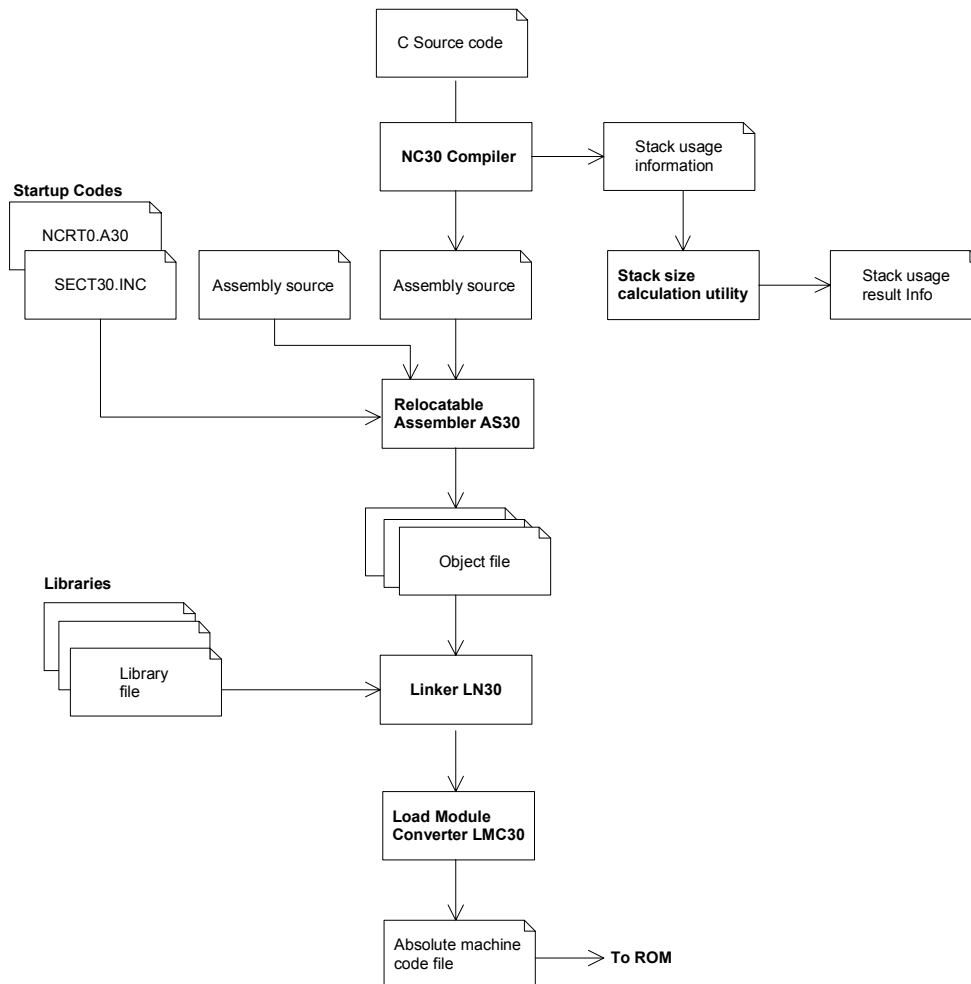


NC30 C-Compiler

- Umfang des Compilers:



- Werdegang eines C-Programmes mit NC30:



NC30 C-Compiler

- C-Compiler nach ANSI mit spezifischen Erweiterungen für M16C.
- **Reservierte Worte:**

<code>_asm</code>	<code>const</code>	<code>far</code>	<code>register</code>	<code>switch</code>
<code>_far</code>	<code>continue</code>	<code>float</code>	<code>return</code>	<code>typedef</code>
<code>_near</code>	<code>default</code>	<code>for</code>	<code>short</code>	<code>union</code>
<code>asm</code>	<code>do</code>	<code>goto</code>	<code>signed</code>	<code>unsigned</code>
<code>auto</code>	<code>double</code>	<code>if</code>	<code>sizeof</code>	<code>void</code>
<code>break</code>	<code>else</code>	<code>int</code>	<code>static</code>	<code>volatile</code>
<code>case</code>	<code>enum</code>	<code>long</code>	<code>struct</code>	<code>while</code>
<code>char</code>	<code>extern</code>	<code>near</code>		

- **Datentypen:**

Systemtypen: (..)=default

	C Data Type	Size	Range
Integer	(unsigned) char	1 Byte	0..255
	signed char		-128..+127
	unsigned short (int)	2 Byte	0..65535
	(signed) short (int)		-32768..+32767
	unsigned int		0..65535
	(signed) int		-32768..+32767
	unsigned long (int)	4 Byte	0..4294967295
	(signed) long (int)		-2147483648..+2147483647
Float	float	4 Byte	9 significant digits
	double	8 Byte	17 significant digits
	long double	8 Byte	17 significant digits

Konstanten

Radix	Notation	Example
decimal		127, +127, -10
hex	Prefix 0x or 0X	0x10, 0XFF10
octal	Prefix 0	010, 022
Single character	Single quote	'a', 'X'
String	Double quote	"a", "X"
Float types	Decimal point or exponential	123.4, -0.001, 1.2234e2, -12.3E-4

Escape Sequenzen

Escape	Description	Notation	Value
<code>\f</code>	Form feed	<code>\f</code>	Single quote
<code>\n</code>	New line	<code>\n</code>	Double quote
<code>\r</code>	Carriage return	<code>\xconstant value</code>	Hex value
<code>\t</code>	Horizontal tab	<code>\oconstant value</code>	Octal value
<code>\\</code>	symbol	<code>\0</code>	Null Code